

MCS

DYEING & FINISHING MACHINERY



CHRONO FLOW-i

HT ROPE DYEING MACHINE



OUR HISTORY

DYEING & FINISHING MACHINERY

MCS

MCS & TERMO INNOVATION ZONE

BLUE
AREA

COMMISSION ECO-DYEHOUSE

EUROPIZZI

AUTOMATION & SOFTWARE

Termo
elettronica



mcsgroup.it
Bergamo - Italy

member of
AGIAT
ITALIAN TEXTILE MACHINERY

MCS spa, since 1963, develops, manufactures and installs discontinuous dyeing machines and washing & preparation lines

2023 ITMA - Milan

MCS exhibits:

- Multiwash-M,
- Comby Jigger-C4,
- Chronoflow,
- Softflow-18

2019 ITMA - Barcellona

MCS exhibits:

- Lavaprint Next,
- Dynamica Sprint,
- Mini Jigger 98,

MCS presents:

- C4 Comby Jigger 143;
- Softflow 18-HT.

2017

MCS presents:

- Mini Jigger 98.

2015 ITMA - Milan

MCS exhibits:

- Multiwash,
- Dynamica Sprint,
- Starwash FS,
- Termopowder XP,
- Texmanager XP,
- Termochem XP.

2014 ITMA - Shanghai

MCS exhibits:

- Starwash Fast Scouring.

2013

MCS celebrate their 50 th anniversary

2011 ITMA - Barcellona

MCS exhibits:

- Dynamica,
- Star Wash,
- Comby Jigger,
- Supervisor Texmanager.

2009

MCS presents:

- Italica.

2008

MCS Re-design of all high and low temperature Jigger models.

2007 ITMA - Munich

MCS exhibits:

- Universal Dyeing,
- First Vento,
- Tumbler Mistral,
- VDA.

2005 IKME - Milan

MCS exhibits:

- Universal Dyeng, VDA.

2003 ITMA - Birmingham

MCS exhibits:

- Multiflow Superior,
- Ecoturbo Beam Dyeing Machine.

2000

MCS acquires 100% of Ter-moelettronica owner-ship.

1999 ITMA - Paris

MCS exhibits:

- Multiflow,
- Softflow 100 Evolution,
- Comby jigger electronic.

1995 ITMA - Milan

MCS exhibits:

- Softflow,
- Long Horn,
- Pumex

1991 ITMA - Hannover

MCS exhibits:

- Tornado Tumbler,
- Maxi & Mid jiggers,
- Lavaprint.

1987 ITMA - Paris

MCS exhibits: Pandora.

1983 ITMA - Milan

MCS exhibits:

- Tubular mercerizer MT26,
- Softflow-82 LT/HT,
- Flow/jet OF83,
- Comby Jigger HT,
- WR rope washing machine.

1980

Europea activity begins, group dyeing and resining company.

1979 ITMA - Hannover

MCS exhibits:

- Jet HT,
- Overflow MO/80 LT,
- MRS65.

1974

MCS begins the design and development of the open width lines.

1971 ITMA - Paris

MCS exhibits:

MCS exhibits the first low temperature jet model.

1968

Europizzi begins its activity

1967

MCS manufactures the first low temperature rope dyeing machine.

1964

MCS begins its activity.

1963

Gino Chiappini, Angelo Cagnazzo, founding MCS. Gino Chiappini is the Chairman of the Board.



CHRONOFLOW-i

HT ROPE DYEING MACHINE

Chronoflow SL es una máquina para la tintura en cuerda de alta temperatura (máx. 144°C).

Con este proyecto nos hemos centrado en la reducción de los tiempos de ciclo, en la fiabilidad extrema, en el mantenimiento y el ahorro energético.

Es una máquina de almacenamiento circular, adecuada para tejidos de punto y ortogonales con gramajes variables.

Para artículos de peso ligero es posible trabajar en cuerda doble o múltiple.

El cuerpo de la máquina puede contener de una a seis cubetas, con capacidad de carga variable según el modelo y la dirección elegida.

Considerando una fibra celulósica de punto con un peso de 250 g/lin. m, las capacidades de carga son las indicadas en el cuadro de la pág. 6.

Todas las partes internas de la máquina en contacto con el tejido se construyen empleando acero inoxidable AISI 316/AISI 316 L. certificado.

Chronoflow SL está completamente diseñado y construido MCS.

Cada novo modelo é testado e exibido, em INNOVATIVE BLUE AREA integrada na tinturaria do Grupo MCS.

Chronoflow-i is a high temperature rope dyeing machine (max 144°C).

With this project we focused on reduction on cycle times, extreme reliability, ease of maintenance and energy savings.

It is a circular deposit machine, suitable for both knitted and orthogonal fabrics with variable weights.

For particularly light weight items, it is possible to work in double or multiple rope.

The machine body contains from one to six trough, with variable charge capacity depending on the model and the chosen version.

Considering a knitted cellulosic fiber with a weight of 250 g/lin.m, the charge capacities are those indicated in the table on page 6.

All the internal parts of the machine in contact with the fabric are built using certified stainless steel AISI 316/AISI 316 L.

Chronoflow-i is entirely engineered and built in MCS.

Each new model is tested and exhibited, in INNOVATIVE BLUE AREA integrated in the MCS Group dyeing plant.

STORIA DELLE MACHINE DA TINTURA IN CORDA MCS

1967 ITMA - Paris: MCS espone el primer modelo de Jet baja temperatura

1979 ITMA - Hannover: MCS espone JET-HT e OVERFLOW MO/80 LT

1983 ITMA - Milan: MCS espone SOFTFLOW 82 HT e FLO-JET OF83 HT

1987 ITMA - Paris: MCS espone PANDORA HT

1995 ITMA - Milan: MCS espone SOFTFLOW 100 HT, LONG HORN HT.

1999 ITMA - Paris: MCS espone MULTIFLOW HT, SOFTFLOW 100 SUPERIOR HT

2000: MCS diseña la EUROFLOW LONG

2003 ITMA - Birmingham: MCS espone MULTIFLOW SUPERIOR.

2007 ITMA - Monaco: MCS espone FIRST HT

2011 ITMA - Barcelona: MCS espone DYNAMICA HT

2015 ITMA - Milan: MCS espone DYNAMICA SPRINT HT

2019 ITMA - Barcelona: MCS presenta SOFTFLOW 18 HT, espone DYNAMICA SPRINT HT

2020: MCS diseña EUROFLOW SPORT

2023: ITMA Milan: MCS espone CHRONOFLOW e SOFTFLOW 18 HT

ROPE DYEING MACHINE HISTORY

1967 ITMA - Paris: MCS exhibits: the first low temperature jet model.

1979 ITMA - Hannover: MCS exhibits JET-HT and OVERFLOW MO/80 LT

1983 ITMA - Milan: MCS exhibits SOFTFLOW 82 HT and FLO-JET OF83 HT

1987 ITMA - Paris: MCS exhibits PANDORA HT

1995 ITMA - Milan: MCS exhibits: SOFTFLOW 100 HT, LONG HORN HT.

1999 ITMA - Paris: MCS exhibits: MULTIFLOW HT, SOFTFLOW 100 SUPERIOR HT

2000 : MCS presents the EUROFLOW LONG

2003 ITMA - Birmingham: MCS exhibits: MULTIFLOW SUPERIOR.

2007 ITMA - Monaco: MCS exhibits FIRST HT

2011 ITMA - Barcelona: MCS exhibits DYNAMICA HT

2015 ITMA - Milan: MCS exhibits DYNAMICA SPRINT HT

2019 ITMA - Barcelona: MCS presents SOFTFLOW 18 HT, exhibits DYNAMICA SPRINT HT

2020 : MCS design the EUROFLOW SPORT

2023 ITMA Milan: MCS exhibits CHRONOFLOW and SOFTFLOW 18 HT

CHRONOFLOW-i

HT ROPE DYEING MACHINE



Equipo estándar

Bomba de circulación principal, centrífuga de alto rendimiento con sistema multi-aspiración.

Sistema de control de presión de boquilla y circulación de baño a través programador

Tobera fija intercambiable, disponible en varios tamaños adecuados para cada necesidad de teñido.

Microprocesador con pantalla táctil de TERMOELETTRONICA, modelo **Control Dye - 15"** (otros paneles bajo pedido del cliente).

Tanque producto, con sonda de nivel neumática, serpentín de calentamiento, mezclador y filtro cónico.

Lavado paredes **SPIRAL WASHING** de alta eficiencia.

Filtro auto-limpiante estático en la salida de la bomba, modelo **SCSF**.

Sistema de descarga por bomba principal, modelo **MQD**.

Plegador interno (uno por cada canasta) para mejorar la disposición y circulación del tejido.

Molinete externo de grande diámetro y deslizamiento reducido.

Intercambiador de calor principal eficiente para reducir los tiempos de calentamiento y enfriamiento.

Porta cable y gabinete eléctrico en acero.

Machine equipment

Main circulation pump, high-performance centrifuge with multi-suction system;

Nozzle pressure and liquor **circulation control system** through dedicated programmer;

Interchangeable fixed nozzle, available in different sizes suitable for every dyeing requirement;

Touch-screen 15" operator panel model **CTRL-DYE** by **TERMOELETTRONICA** (other operator panels on request);

Products tank, with pneumatic level probe, heating coil, mixer and conical filter;

High efficiency **SPIRAL WASHING** for wall washing;

Static self-cleaning filter **SSCF** on pump delivery

Discharge system by main pump **MQD**;

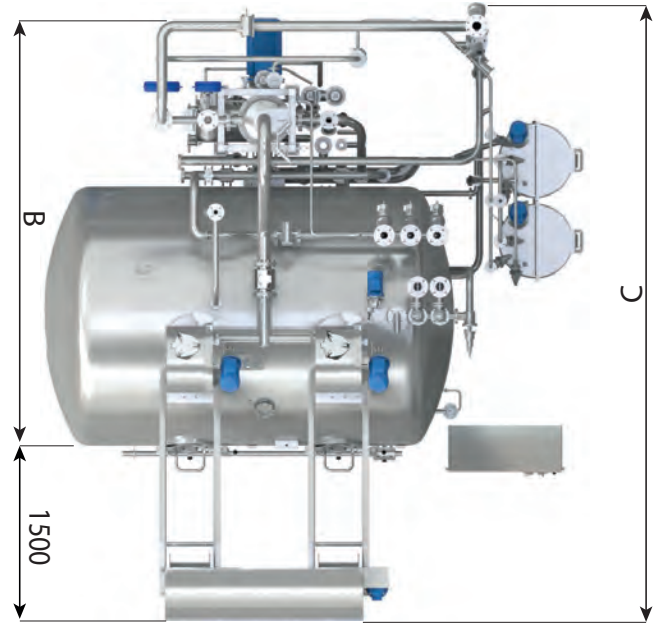
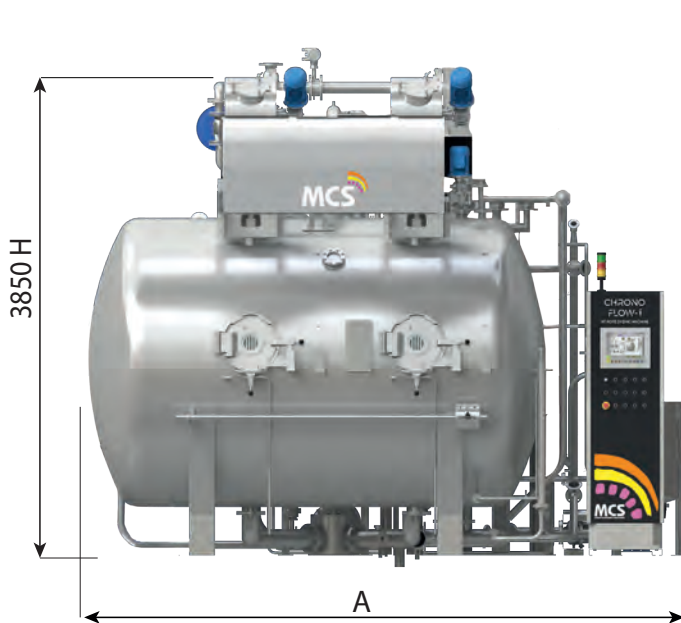
Internal plaiters (one per tank) for better arrangement and circulation of the fabric;

Increased external reel with reduced slippage;

Efficient main heat exchanger for reduction of heating and cooling times;

Electrical panel and wiring ducts completely in stainless steel

MST bath preparation tank with level control/management system, heating coil and recirculation pump; **(Optional at request)**.



**NOMINAL
CAPACITY
GUARANTEED**

**LIQUOR RATIO
1+FABRIC ABSORPTION**

	Loading [Kg]	Ropes [n]	A [mm]	B [mm]	C [mm]	H [mm]
CRFi-1J	200	1	3.100	3.500	5.000	3.970
CRFi-2J	400	2	4.250	4.100	5.600	3.700
CRFi-3J	600	3	5.300	4.200	5.700	3.800
CRFi-4J	800	4	6.450	4.200	5.700	3.970
CRFi-6J	1.000	6	8.500	4.500	6.000	4.150

	Loading [Kg]	Ropes [n]	A [mm]	B [mm]	C [mm]	H [mm]
CRFi-1XJ	250	1	3.300	3.500	5.000	3.970
CRFi-2XJ	500	2	4.700	4.100	5.600	3.700
CRFi-3XJ	750	3	6.000	4.200	5.700	3.970
CRFi-4XJ	1.000	4	7.300	4.500	6.000	3.970
CRFi-6XJ	1.500	6	10.000	4.500	6.000	4.150

	Loading [Kg]	Ropes [n]	A [mm]	B [mm]	C [mm]	H [mm]
CRFi-1XXJ	300	1	3.500	3.500	5.000	3.970
CRFi-2XXJ	600	2	5.100	4.100	5.600	3.700
CRFi-3XXJ	900	3	6.600	4.200	5.700	3.970
CRFi-4XXJ	1.200	4	8.200	4.500	6.000	3.970
CRFi-6XXJ	1.800	6	11.300	4.500	6.000	4.150

	Loading [Kg]	Ropes [n]	A [mm]	B [mm]	C [mm]	H [mm]
CRFi-SJ	300	1	2.900	3.500	5.000	3.970

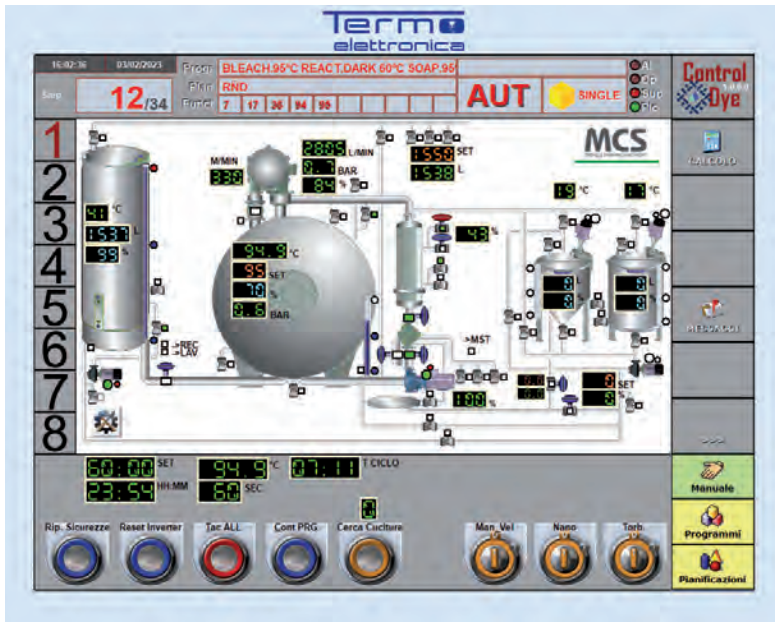
Loading capacity mentioned in this table may slightly vary depending on the type of article considered.

WE REMAIN AVAILABLE FOR ANY TECHNICAL INFORMATION

MCS reserve the right to change technical data and specifications without prior notice.

CHRONO-AUTOMATION

CTRL-DYE



Panel de operador desarrollado en windows para implemetar de forma avanzada todas las funciones de diagnóstico, monitoreo y automatización de las máquinas de teñido.

Pantalla táctil 15", diseñado específicamente para uso industrial: cada función resulta mas fácil e inmediato acceso.

A petición se puede utilizar cualquier micro disponible en el mercado.

Operatiron Panel developed in Windows room to improve all diagnostic functions, monitoring and automation of dyeing machines.

With Touch-Screen 15", purposely designed for industrial use, the access to functions is easy and immediate.

Upon Customer's request it is always possible to install different brands of controllers.

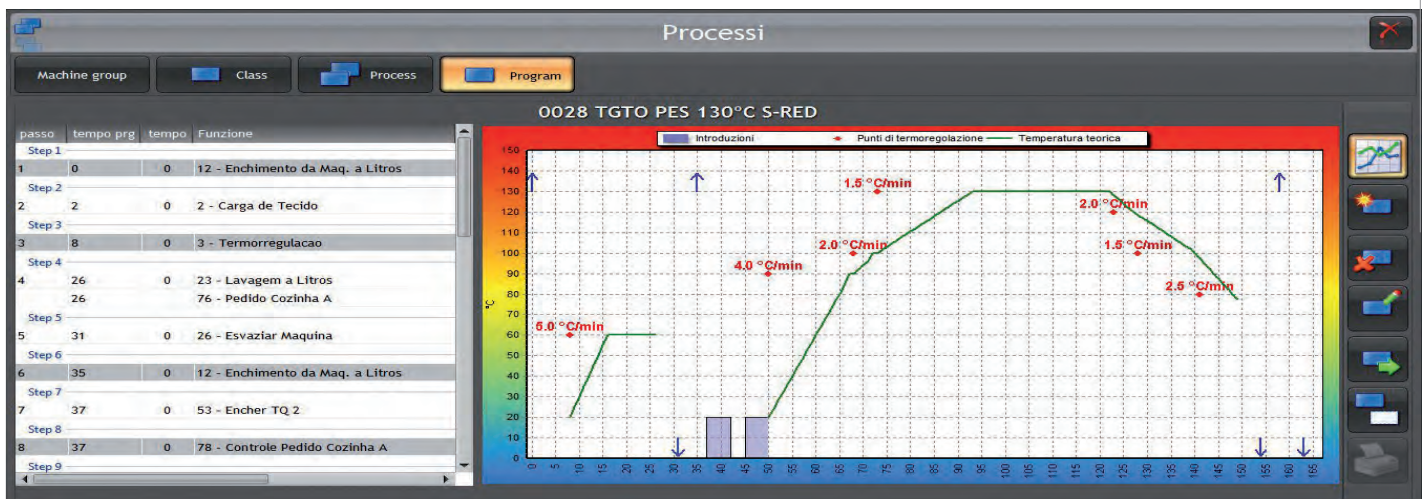
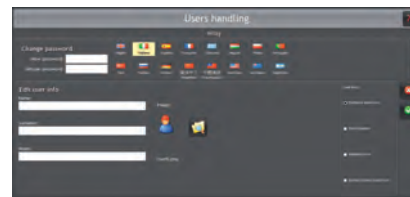
TEXMANAGER 4.0

Software de gestión de producción integrada que incluye:

- Gestión de personal
- Optimización de los recursos humanos
- Gestión de maquinaria
- Gerencia departamentos de producción
- Gestione almacén

Integrated production management software including:

- Personnel Management*
- Optimization of human resources*
- Management of machinery*
- Software for integrated Production Management*
- Management of production departments*
- Warehouse management*



FEEL THE POWER OF WATER

DYEING & FINISHING MACHINERY



MCS

Bergamo | Italy | mcstextile.it



THINK BEFORE YOU PRINT