

# MCS

DYEING & FINISHING MACHINERY



# CHRONO FLOW-i

HT ROPE DYEING MACHINE



# OUR HISTORY

DYEING & FINISHING MACHINERY

**MCS**

MCS & TERMO INNOVATION ZONE

**BLUE**  
AREA

COMMISSION ECO-DYEHOUSE

**EUROPIZZI**

AUTOMATION & SOFTWARE

**Termo**  
elettronica



[mcsgroup.it](http://mcsgroup.it)  
Bergamo - Italy

member of  
**AGIAT**  
ITALIAN TEXTILE MACHINERY

MCS spa, since 1963, develops, manufactures and installs discontinuous dyeing machines and washing & preparation lines

## 2023 ITMA - Milan

### MCS exhibits:

- Multiwash-M,
- Comby Jigger-C4,
- Chronoflow,
- Softflow-18

## 2019 ITMA - Barcellona

### MCS exhibits:

- Lavaprint Next,
- Dynamica Sprint,
- Mini Jigger 98,

### MCS presents:

- C4 Comby Jigger 143;
- Softflow 18-HT.

## 2017

### MCS presents:

- Mini Jigger 98.

## 2015 ITMA - Milan

### MCS exhibits:

- Multiwash,
- Dynamica Sprint,
- Starwash FS,
- Termopowder XP,
- Texmanager XP,
- Termochem XP.

## 2014 ITMA - Shanghai

### MCS exhibits:

- Starwash Fast Scouring.

## 2013

MCS celebrate their 50 th anniversary

## 2011 ITMA - Barcellona

### MCS exhibits:

- Dynamica,
- Star Wash,
- Comby Jigger,
- Supervisor Texmanager.

## 2009

### MCS presents:

- Italica.

## 2008

MCS Re-design of all high and low temperature Jigger models.

## 2007 ITMA - Munich

### MCS exhibits:

- Universal Dyeing,
- First Vento,
- Tumbler Mistral,
- VDA.

## 2005 IKME - Milan

### MCS exhibits:

- Universal Dyeng, VDA.

## 2003 ITMA - Birmingham

### MCS exhibits:

- Multiflow Superior,
- Ecoturbo Beam Dyeing Machine.

## 2000

MCS acquires 100% of Termoelettronica owner-ship.

## 1999 ITMA - Paris

### MCS exhibits:

- Multiflow,
- Softflow 100 Evolution,
- Comby jigger electronic.

## 1995 ITMA - Milan

### MCS exhibits:

- Softflow,
- Long Horn,
- Pumex

## 1991 ITMA - Hannover

### MCS exhibits:

- Tornado Tumbler,
- Maxi & Mid jiggers,
- Lavaprint.

## 1987 ITMA - Paris

### MCS exhibits: Pandora.

## 1983 ITMA - Milan

### MCS exhibits:

- Tubular mercerizer MT26,
- Softflow-82 LT/HT,
- Flow/jet OF83,
- Comby Jigger HT,
- WR rope washing machine.

## 1980

Europea activity begins, group dyeing and resining company.

## 1979 ITMA - Hannover

### MCS exhibits:

- Jet HT,
- Overflow MO/80 LT,
- MRS65.

## 1974

MCS begins the design and development of the open width lines.

## 1971 ITMA - Paris

### MCS exhibits:

MCS exhibits the first low temperature jet model.

## 1968

Europizzi begins its activity

## 1967

MCS manufactures the first low temperature rope dyeing machine.

## 1964

MCS begins its activity.

## 1963

Gino Chiappini, Angelo Cagnazzo, founding MCS. Gino Chiappini is the Chairman of the Board.



# CHRONOFLOW-i

## HT ROPE DYEING MACHINE

**Chronoflow SL** é uma máquina de tingimento de corda em alta temperatura (max 144 alguém C).

Com este projeto, nos concentramos em reduzir os tempos de ciclo, confiabilidade extrema, facilita a manutenção e economia de energia.

É uma máquina de armazenamento circular, adequada para tecidos de malha e planos com pesos variáveis.

Para artigos de pesos leves especiais é possível trabalhar em acordes duplos ou múltiplos.

O corpo da máquina pode conter de um a seis tanques, com capacidade de carga variável dependendo do modelo e da versão escolhida.

Considerando uma malha de fibra celulósica com um peso de 250 g/lin. m, as capacidades de enchimento são as indicadas na tabela na p. 6.

Todas as peças internas da máquina em contato com o tecido são construídas usando aço inoxidável certificado AISI 316/ AISI 316 L.

O Chronoflow SL é totalmente projetado e construído em MCS.

Cada nuevo modelo es probado y expuesto, en INNOVATIVE BLUE ÁREA integrado en la tintorería del grupo MCS.

**Chronoflow-i** is a high temperature rope dyeing machine (max 144°C).

With this project we focused on reduction on cycle times, extreme reliability, ease of maintenance and energy savings.

It is a circular deposit machine, suitable for both knitted and orthogonal fabrics with variable weights.

For particularly light weight items, it is possible to work in double or multiple rope.

The machine body contains from one to six trough, with variable charge capacity depending on the model and the chosen version.

Considering a knitted cellulosic fiber with a weight of 250 g/lin.m, the charge capacities are those indicated in the table on page 6.

All the internal parts of the machine in contact with the fabric are built using certified stainless steel AISI 316/AISI 316 L.

**Chronoflow-i** is entirely engineered and built in MCS.

Each new model is tested and exhibited, in INNOVATIVE BLUE AREA integrated in the MCS Group dyeing plant.

## HISTÓRIA DAS MÁQUINAS DE TINGIMENTO EM CORDA MCS

1967 ITMA - Paris: MCS expõe o primeiro modelo de jato de baixa temperatura

1979 ITMA - Hannover: MCS expõe JET-HT e OVERFLOW MO/80 LT

1983 ITMA - Milão: MCS expõe SOFTFLOW 82 HT e FLO-JET OF83 HT

1987 ITMA - Paris: MCS expõe PANDORA HT

1995 ITMA - Milão: MCS expõe SOFTFLOW 100 HT, LONG HORN HT.

1999 ITMA - Paris: MCS expõe MULTIFLOW HT, SOFTFLOW 100 SUPERIOR HT

2000: MCS apresenta la EUROFLOW LONG

2003 ITMA - Birmingham: MCS expõe MULTIFLOW SUPERIOR.

2007 ITMA - Monaco: MCS expõe FIRST HT

2011 ITMA - Barcelona: MCS expõe DYNAMICA HT

2015 ITMA - Milão: MCS expõe DYNAMICA SPRINT HT

2019 ITMA - Barcelona: MCS apresenta SOFTFLOW 18 HT, espone DYNAMICA SPRINT HT

2020: MCS projeta EUROFLOW SPORT

2023: ITMA Milão: MCS expõe CHRONOFLOW e SOFTFLOW 18 HT

## ROPE DYEING MACHINE HISTORY

1967 ITMA - Paris: MCS exhibits: the first low temperature jet model.

1979 ITMA - Hannover: MCS exhibits JET-HT and OVERFLOW MO/80 LT

1983 ITMA - Milan: MCS exhibits SOFTFLOW 82 HT and FLO-JET OF83 HT

1987 ITMA - Paris: MCS exhibits PANDORA HT

1995 ITMA - Milan: MCS exhibits: SOFTFLOW 100 HT, LONG HORN HT.

1999 ITMA - Paris: MCS exhibits: MULTIFLOW HT, SOFTFLOW 100 SUPERIOR HT

2000 : MCS presents the EUROFLOW LONG

2003 ITMA - Birmingham: MCS exhibits: MULTIFLOW SUPERIOR.

2007 ITMA - Monaco: MCS exhibits FIRST HT

2011 ITMA - Barcelona: MCS exhibits DYNAMICA HT

2015 ITMA - Milan: MCS exhibits DYNAMICA SPRINT HT

2019 ITMA - Barcelona: MCS presents SOFTFLOW 18 HT, exhibits DYNAMICA SPRINT HT

2020 : MCS design the EUROFLOW SPORT

2023 ITMA Milan: MCS exhibits CHRONOFLOW and SOFTFLOW 18 HT

# CHRONOFLOW-i

## HT ROPE DYEING MACHINE



### Equipamento standard

**Bomba de circulação principal**, centrífuga de alto desempenho com sistema de sucção múltipla.

**Sistema de controlo da pressão do bocal** e circulação do banho pelo programador dedicado.

**Bico intercambiável fixo**, disponível em vários tamanhos adequados para cada necessidade de tingimento.

Painel do operador com tela sensível ao toque 15" **modelo CTRL-DYE 15"** da **TERMOELETTRONICA** (outros painéis do operador mediante solicitação).

**Tanque do produto**, com sonda de nível pneumática, bobina de aquecimento, misturador e filtro cônico.

Lavagem em **ESPIRAL** de alta eficiência.

Filtro de auto-limpeza estática **SSCF** na entrega da bomba.

Sistema de exaustão pela bomba principal **MQD**.

**Aba interna** (uma por banho) para melhor disposição e circulação do tecido.

**Carretel externo aumentado** e deslizamento reduzido.

**Trocador de calor principal eficiente** para tempos reduzidos de aquecimento e resfriamento.

**Painel elétrico e dutos de fiação completamente em aço inoxidável.**

### Machine equipment

**Main circulation pump**, high-performance centrifuge with multi-suction system;

**Nozzle pressure and liquor circulation control system** through dedicated programmer;

**Interchangeable fixed nozzle**, available in different sizes suitable for every dyeing requirement;

**Touch-screen 15" operator panel model CTRL-DYE** by **TERMOELETTRONICA** (other operator panels on request);

**Products tank**, with pneumatic level probe, heating coil, mixer and conical filter;

High efficiency **SPIRAL WASHING** for wall washing;

Static self-cleaning filter **SSCF** on pump delivery

Discharge system by main pump **MQD**;

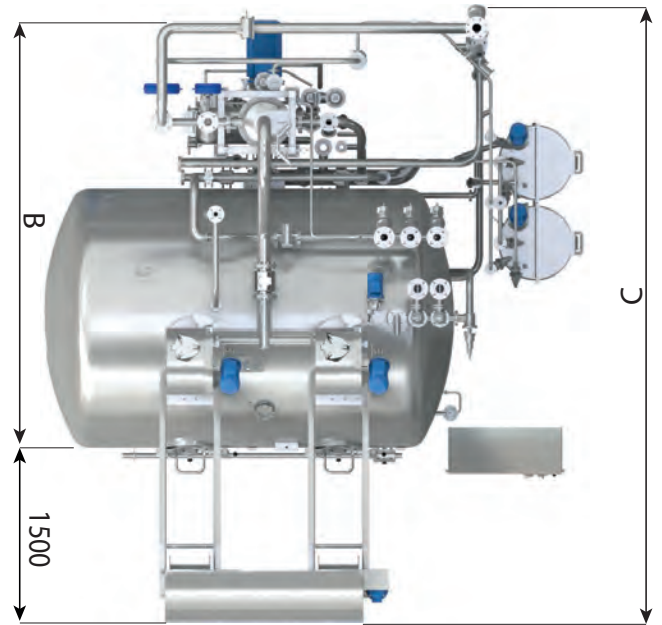
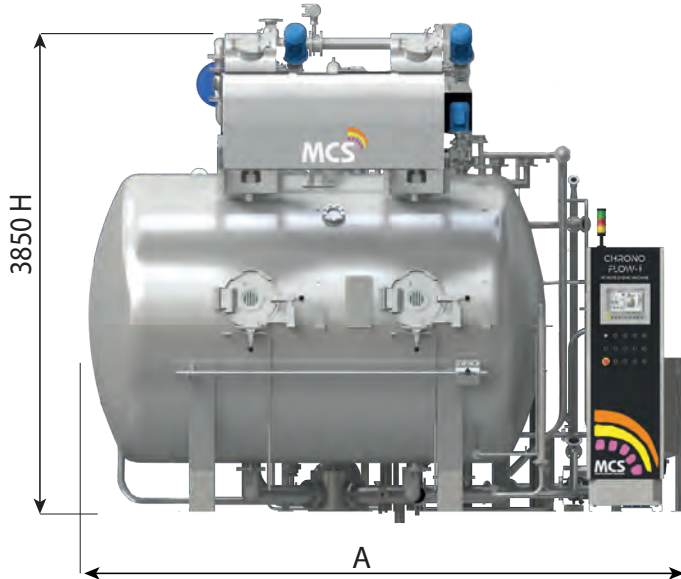
**Internal plaiters** (one per tank) for better arrangement and circulation of the fabric;

**Increased external reel** with reduced slippage;

**Efficient main heat exchanger** for reduction of heating and cooling times;

**Electrical panel and wiring ducts completely in stainless steel**

**MST bath preparation tank** with level control/management system, heating coil and recirculation pump; **(Optional at request)**.



**NOMINAL  
CAPACITY  
GUARANTEED**

**LIQUOR RATIO  
1+FABRIC ABSORPTION**

	Loading [Kg]	Ropes [n]	A [mm]	B [mm]	C [mm]	H [mm]
CRFi-1J	200	1	3.100	3.500	5.000	3.970
CRFi-2J	400	2	4.250	4.100	5.600	3.700
CRFi-3J	600	3	5.300	4.200	5.700	3.800
CRFi-4J	800	4	6.450	4.200	5.700	3.970
CRFi-6J	1.000	6	8.500	4.500	6.000	4.150

	Loading [Kg]	Ropes [n]	A [mm]	B [mm]	C [mm]	H [mm]
CRFi-1XJ	250	1	3.300	3.500	5.000	3.970
CRFi-2XJ	500	2	4.700	4.100	5.600	3.700
CRFi-3XJ	750	3	6.000	4.200	5.700	3.970
CRFi-4XJ	1.000	4	7.300	4.500	6.000	3.970
CRFi-6XJ	1.500	6	10.000	4.500	6.000	4.150

	Loading [Kg]	Ropes [n]	A [mm]	B [mm]	C [mm]	H [mm]
CRFi-1XXJ	300	1	3.500	3.500	5.000	3.970
CRFi-2XXJ	600	2	5.100	4.100	5.600	3.700
CRFi-3XXJ	900	3	6.600	4.200	5.700	3.970
CRFi-4XXJ	1.200	4	8.200	4.500	6.000	3.970
CRFi-6XXJ	1.800	6	11.300	4.500	6.000	4.150

	Loading [Kg]	Ropes [n]	A [mm]	B [mm]	C [mm]	H [mm]
CRFi-SJ	300	1	2.900	3.500	5.000	3.970

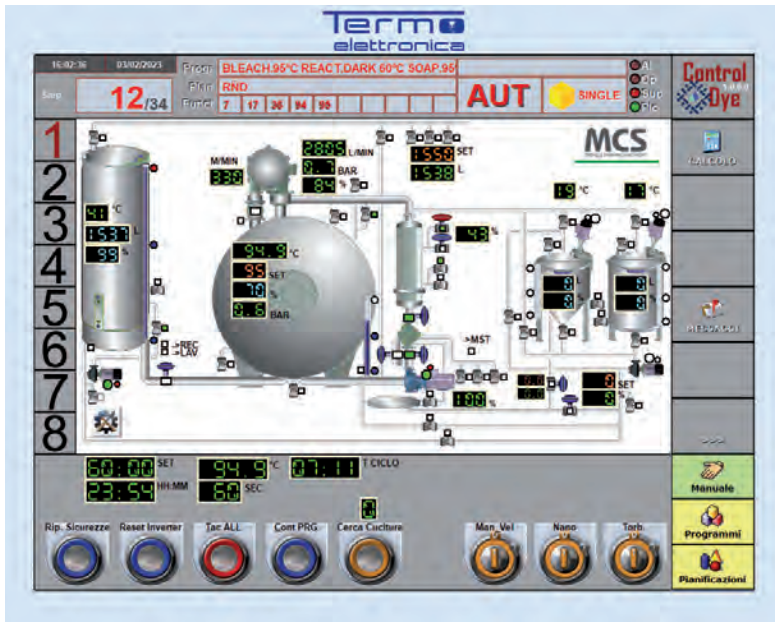
Loading capacity mentioned in this table may slightly vary depending on the type of article considered.

**WE REMAIN AVAILABLE FOR ANY TECHNICAL INFORMATION**

MCS reserve the right to change technical data and specifications without prior notice.

# CHRONO-AUTOMATION

## CTRL-DYE



Painel de operador desenvolvido no windows para implementar de forma avançada todas as funções de diagnóstico, monitoramento e automação das máquinas de tingimento.

Pantalla toque 15", projetado especificamente para uso industrial: cada função é mais fácil e imediatamente acessível.

A pedido, você pode usar qualquer micro disponível no mercado.

*Operation Panel developed in Windows room to improve all diagnostic functions, monitoring and automation of dyeing machines.*

*With Touch-Screen 15", purposely designed for industrial use, the access to functions is easy and immediate.*

*Upon Customer's request it is always possible to install different brands of controllers.*

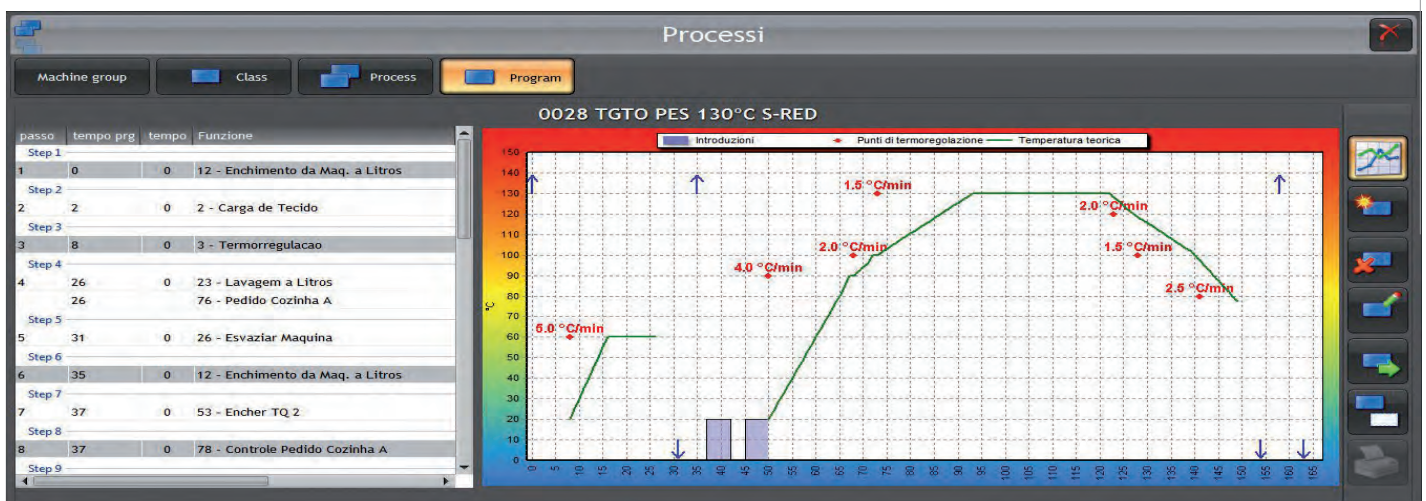
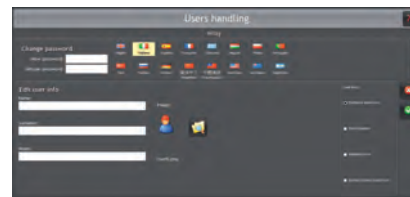
## TEXMANAGER 4.0

Software de gestão de produção integrada que inclui:

- Gestão do pessoal
- Optimização dos recursos humanos
- Gestão de máquinas
- Gestão de departamentos de produção
- Gestão de armazéns

*Integrated production management software including:*

- Personnel Management*
- Optimization of human resources*
- Management of machinery*
- Software for integrated Production Management*
- Management of production departments*
- Warehouse management*





# FEEL THE POWER OF WATER

DYEING & FINISHING MACHINERY



**MCS**

Bergamo | Italy | [mcstextile.it](http://mcstextile.it)



THINK BEFORE YOU PRINT